

KIM

Graduate School of Humanities and Social Sciences
Doctoral Program in Literature and Linguistics

● **Area of Specialty**

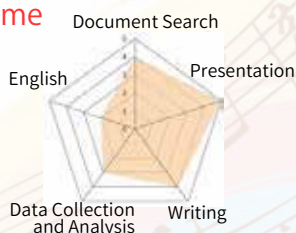
Japanese Literature, English Literature, Literary theory, Comparative literature



If you have problems, please come to support desk.

● **I would recommend that you come to the Learning Adviser's Desk,**

- if you don't know how to write reports
- if you don't know how to find papers and books
- if you don't have confidence in presentation



KIM's Radar Chart

NAKAMURA

Graduate School of Pure and Applied Sciences
Doctoral Program in Mathematics

● **Area of Specialty**

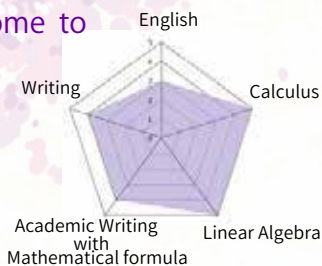
Analysis, Partial Differential Equation, Self-Validating Numerical Computations



If you have anything in trouble, please do not hesitate to talk. Let's think of a solution together.

● **I would recommend that you come to the Learning Adviser's Desk,**

- if you don't know how to write reports
- if you don't know how to use the computer
- if you don't know how to find documents



NAKAMURA's Rader Chart

KO.MI.NAMI

Graduate School of Library, Information and Media Studies
Doctoral Program

● **Area of Specialty**

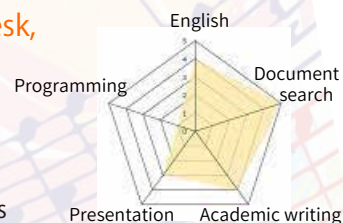
Library and Information Science, American Studies, Gender Studies



"I have discussed with my friend, but I was still not sure."
"But I don't know whether I should ask my professor..."
When you have any problem, please come see us!
We will be waiting for you!!

● **I would recommend that you come to the Learning Adviser's Desk,**

- if you are not sure how to write a bibliography,
- if you want LA to show your presentation,
- if you need help choosing books for essay writing



KONINAMI's Rader Chart

NATALIA

Graduate School of Humanities and Social Sciences,
Doctoral Program in International and Advanced Japanese Studies

● **Area of Specialty**

Literature, Linguistics, Media Studies, Social Movements, Cross-Cultural Communication



I have been studying abroad for a long period of time. I would like to use this experience and language skills (Russian, Japanese, English) to help you solve your study problems. Please feel free to ask me if you have any questions.

● **I would recommend that you come to the Learning Adviser's Desk,**

- If you get frustrated when you have to write a paper in English;
- If you unfamiliar with citation styles and citation management tools;
- If you want to know more about academic writing;
- If you want to learn about international students' life.



NATALIA's Rader Chart

Here is the Student Support Desk☆



There are eight Learning Advisers are ready to offer assistance and provide advices for students to help studying. We are available anytime 14:00-19:00 on weekdays (Term Period) at the Student Support Desk in the Central Library.

OYAMADA

Graduate School of Human Sciences
Doctoral Program in Division of Education

●Area of Specialty

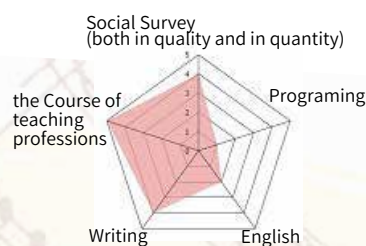
Sociology of Education, Education for Human Co-existence, Education



If you want to ask about your study and your student life, please feel free to come to my desk.

●I would recommend that you come to the Learning Adviser's Desk,

- If you want to ask about the report of the classes,
- If you want to ask your student life,
- If you want to ask about the course of teaching professions and social surveys, etc.



OYAMADA's Rader Chart

SATO

Graduate School of Humanities and Social Sciences
International Public Policy

●Area of Specialty

Sociology, Social Welfare, Philosophy



If you have some worries (ex. Tukuba life, class in University, etc.), please come LA desc anytime you want to. We will endeavor to support you!

●I would recommend that you come to the Learning Adviser's Desk,

- If you are not sure how to find the document
- If you want someone to advise on your report or treatise



SATO's Rader Chart

SHIMIZU

Graduate School of Life and Environmental Sciences,
Doctoral Program in Earth Evolution Sciences

●Area of Specialty

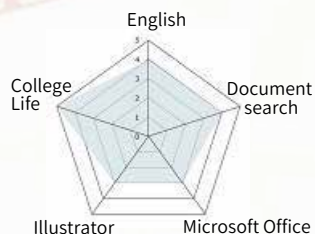
Paleontology, Dinosaur, Geology, Science Communication, Museology



NEED SOME HELP !?
Just Come and Ask Me !!

●I would recommend that you come to the Learning Adviser's Desk,

- If you have some troubles with your college life,
- If you cannot find the paper which you are looking for,
- If you want to know how to improve your Japanese,



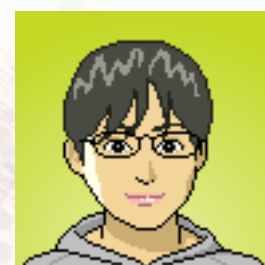
SHIMIZU's Rader Chart

SUZUKI

Graduate School of Life and Environmental Sciences,
Master's Program in Geoscience

●Area of Specialty

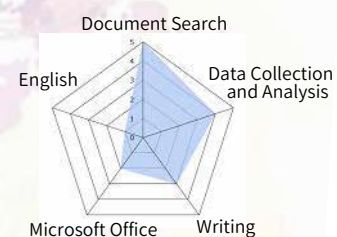
Human Geography, Historical Geography, Field Work, Map



Even with small questions, please do not hesitate to consult me. I will do my best.

●I would recommend that you come to the Learning Adviser's Desk,

- If you don't know how to study
- If you want to talk about worrying in daily life
- If you'd like to start new things but don't know what to do



SUZUKI's Rader Chart

You can make a **reservation** for Student Support Desk.

Let's check the schedule at <https://www.tulips.tsukuba.ac.jp/lib/en/support/la>